

GemSafe Libraries (MCA21 User) – User Manual

GemSafe Libraries Overview:

GemSafe Libraries from Gemplus is smart card-based crypto-library software that brings portability and the highest level of security on corporate and government networks. It provides the perfect complement to your network security implementation by storing digital identity credentials on a personal smart card/USB Token.

1. Installing the Software

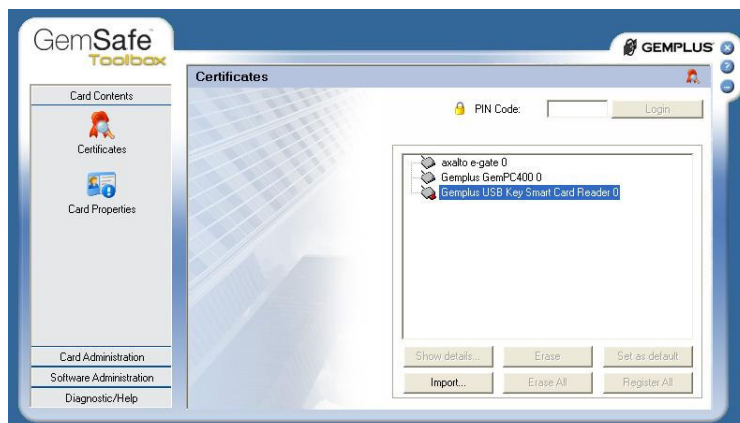
- a. Insert the CD into the CD-ROM
- b. The installation should automatically start.
- c. If the installation does not start automatically please follow the below steps:
- d. Browse to the CD folder
- e. Select the Setup.exe file from the CD Folder
- f. Follow the setup process to install the Software

2. GemSafe Toolbox

The tools for GemSafe Admin have been reorganized and the GUI has been greatly enhanced in order to be more user friendly and intuitive for the end user. The tools are now grouped in the GemSafe Toolbox that will provide following utilities for the end user:

- Card Administration
 - Manage PIN change if allowed
- Card Contents
 - View Card information
 - View Certificates stored in card
- Diagnostic (for help desk/troubleshooting)
 - View product/registry/file information

See below this new interface for the GemSafe Toolbox GUI



3. Changing a User PIN

For security reasons, you should change your User PIN when you first start using your card and at periodic intervals thereafter.

To change a User PIN:

1. Open the Card Details Tool
2. Make sure the USB Token corresponding to the PIN you want to change is selected
3. Click **PIN > Change**
4. Make sure **User PIN** is selected in the list provided
5. Enter the existing PIN (default PIN is 1234) in the **Old PIN** box
6. Enter the **New PIN**
7. Re-enter the new PIN in the **Confirm New PIN** box
8. Click **Change**. Your User PIN is changed

The screenshot shows the 'PIN Management' window within the 'GemSafe Toolbox' application. The window title is 'PIN Management' and it is for 'Gemplus USB Key Smart Card Reader 0'. On the left, a sidebar lists 'Card Contents', 'Card Administration', 'PIN Management' (selected), 'Software Administration', and 'Diagnostic/Help'. The main area has a 'PIN Section' dropdown set to 'User'. Below this are input fields for 'Old PIN:', 'New PIN:', and 'Confirm New PIN:'. A checkbox 'Force user to change his PIN' is present, and a 'Change PIN' button is at the bottom. To the right, 'PIN Policy Rules' are listed with status indicators: 'Must be at least 4 characters long' (red X), 'Must be less than or equal to 8 characters long' (green check), 'Must contain only numeric characters' (green check), 'Must not reuse last PIN code' (green check), and 'Must not contain repeated pattern' (green check). A '<< Previous' button is at the bottom right.

4. Technical Overview GemSafe Libraries v4.2

You will find below a list of compatibility, compliance that Gemplus has tested during the development of the product.

Compatible OS	Windows 98SE Windows ME Windows NT4 SP6 Windows 2000 SP3 and SP4 Windows XP up to SP2 Windows Server 2003
Hardware requirements	Disk Space 20MB minimum (user generated version) 90MB (Admin version) RAM 128 MB minimum Pentium III 700MHz or faster processor
Compatible Office Software	Adobe Acrobat v5.0, 6.0 and 7.0 above Microsoft office 97, 2000, XP, 2003 Outlook Express Netscape Messenger
PKCS#11 Specifications	PKCS#11 v2.01

Manufactured & Supplied by Gemplus to

M/s. Consultants india.net
6G, Bigjos Tower,
Netaji Subhash Place,
Pitampura,
Delhi - 110034.